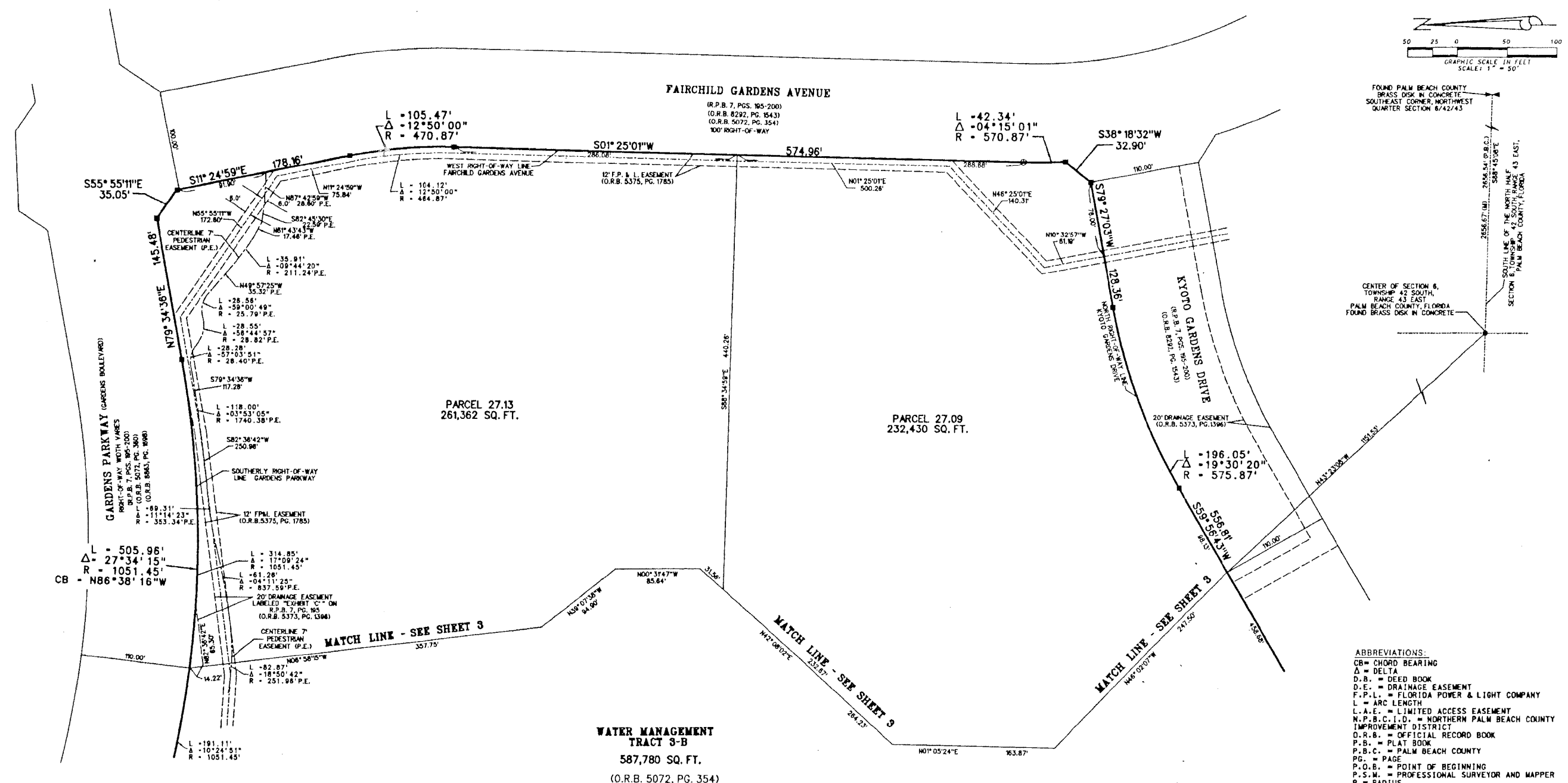


REGIONAL CENTER PARCELS 27.09, 27.13 AND WATER MANAGEMENT TRACT 3-B

SITUATE IN SECTION 6, TOWNSHIP 42 SOUTH, RANGE 43 EAST, CITY OF PALM BEACH GARDENS, PALM BEACH COUNTY, FLORIDA
MAY, 2001
SHEET 2 OF 3



FOUND PALM BEACH COUNTY BRASS DISK IN CONCRETE SOUTHEAST CORNER, NORTHWEST QUARTER SECTION 6/42/43

CENTER OF SECTION 6, TOWNSHIP 42 SOUTH, RANGE 43 EAST, PALM BEACH COUNTY, FLORIDA FOUND BRASS DISK IN CONCRETE

SOUTH LINE OF THE NORTH HALF SECTION 6, TOWNSHIP 42 SOUTH, RANGE 43 EAST, PALM BEACH COUNTY, FLORIDA

- ABBREVIATIONS:
- CB = CHORD BEARING
 - Δ = DELTA
 - D.B. = DEED BOOK
 - D.E. = DRAINAGE EASEMENT
 - F.P.L. = FLORIDA POWER & LIGHT COMPANY
 - L = ARC LENGTH
 - L.A.E. = LIMITED ACCESS EASEMENT
 - N.P.B.C.I.D. = NORTHERN PALM BEACH COUNTY IMPROVEMENT DISTRICT
 - O.R.B. = OFFICIAL RECORD BOOK
 - P.B. = PLAT BOOK
 - P.B.C. = PALM BEACH COUNTY
 - PG. = PAGE
 - P.O.B. = POINT OF BEGINNING
 - P.S.M. = PROFESSIONAL SURVEYOR AND MAPPER
 - R = RADIUS
 - R.P.B. = ROAD PLAT BOOK
 - P.E. = PEDESTRIAN EASEMENT

WATER MANAGEMENT TRACT 3-B
587,780 SQ. FT.
(O.R.B. 5072, PG. 354)

LIDBERG LAND SURVEYING, INC.
LB4431 675 West Inlandtown Road, Suite 200, Jupiter, Florida 33458 TEL: 561-746-8454

CAD: K:\LSTATION\SECTION\06-42-43\2500306\2500306.DGN	
REF: K:\LSTATION\SECTION\06-42-43\073001\073010.DGN	
FLD. B.D.	FB. PG. JOB 00-250(306)
OFF. L.J.C.	DATE 12/21/00
CKD. D.C.L.	SHEET 2 OF 3 DWG. 000-250P